

Overview

This document will explain how to integrate the Brivo Access cloud-based access control systems into the exacqVision VMS. This allows you to monitor and manage access control events from within the exacqVision client. (This is **not** a comprehensive Brivo Access configuration guide. For assistance configuring your Brivo system, please contact [Brivo Support](#).)

Within exacqVision you will be able to:

- Observe the current state of all configured doors from Brivo Access.
- Unlock or Lock the door(s).
 - NOTE: Currently, this integration only supports doors, and no other devices/features.
- Search for events associated with each door using terms like *unlock*, *access denied*, and *username*.
- Use Event Linking to link Security Integration Alert and Alarm events with cameras and other server functions to perform actions like record video, send an email, etc.
- Use Associations to place icons on a live camera to perform various actions like unlock a door from the Live Page.
- Use Web Panels to see the rest of the features from the Brivo Access web page.
- Use Maps to drag and drop door locations onto the map image and control the doors from there.

Minimum System Requirements

- ExacqVision Server version 22.03
- ExacqVision Professional **or** Enterprise License
- Brivo Access software and hardware
- Brivo Access API Account Key (contact Brivo for more detail.)

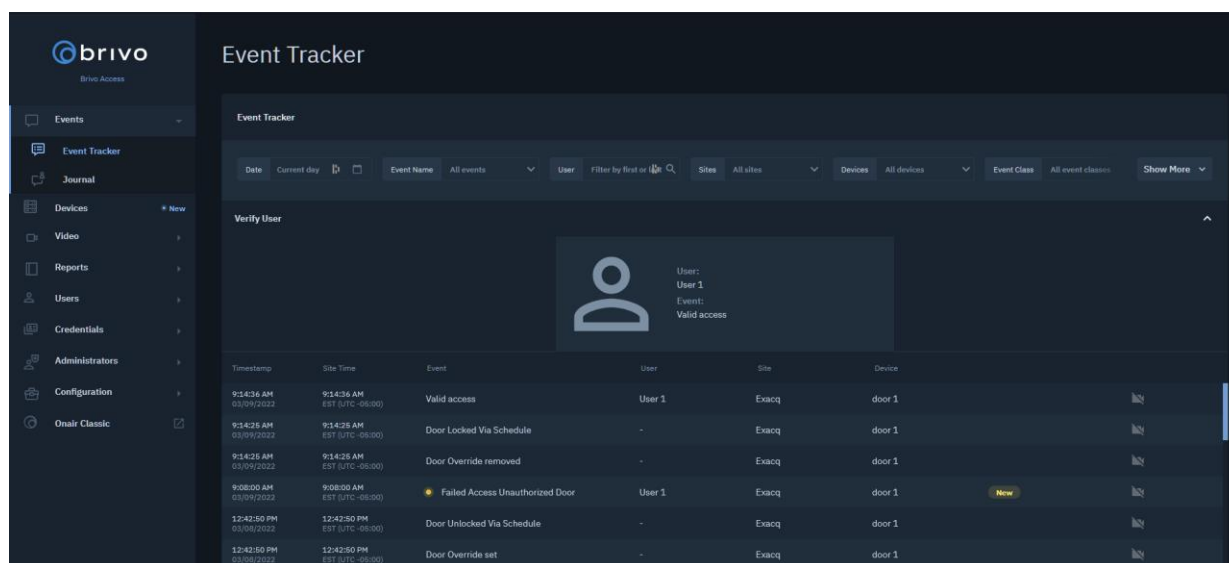
Installation

- EXACQVISION – This document assumes that you already have the exacqVision software correctly installed and licensed. If you need assistance, please contact our [Technical Support](#) team.
- BRIVO ACCESS – The Brivo Support team will assist with installing and configuring system hardware.

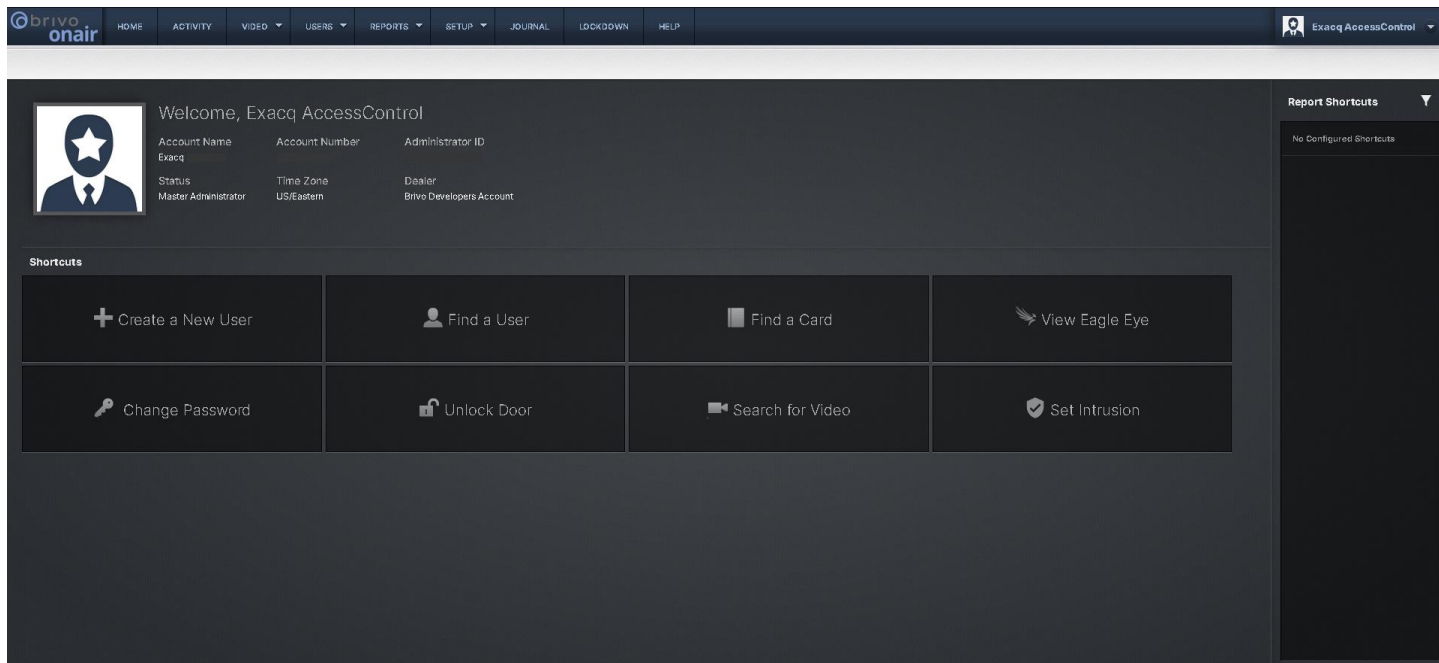
Brivo Access Configuration

When you apply for the Brivo Access API Account Key, you will configure a **username and password**. You will also obtain a **Client Secret** code that will be used to connect to exacqVision. Once you have these details, move on to the next steps.

1. Open a web browser and go to <https://access.brivo.com>. You will see this page.

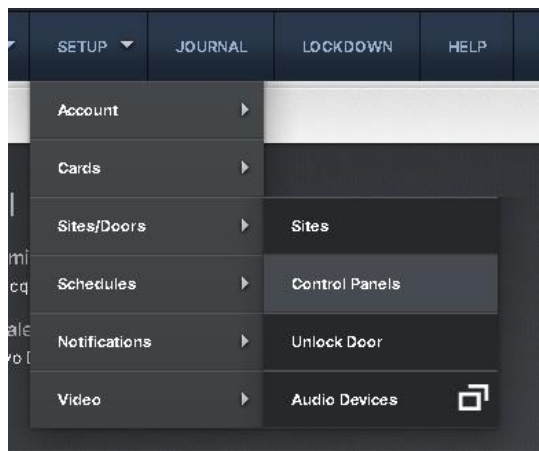


2. Navigate to the “Onair Classic” page from the menu on the left side of the page.



3. Select Setup > Sites/Doors > Control Panels

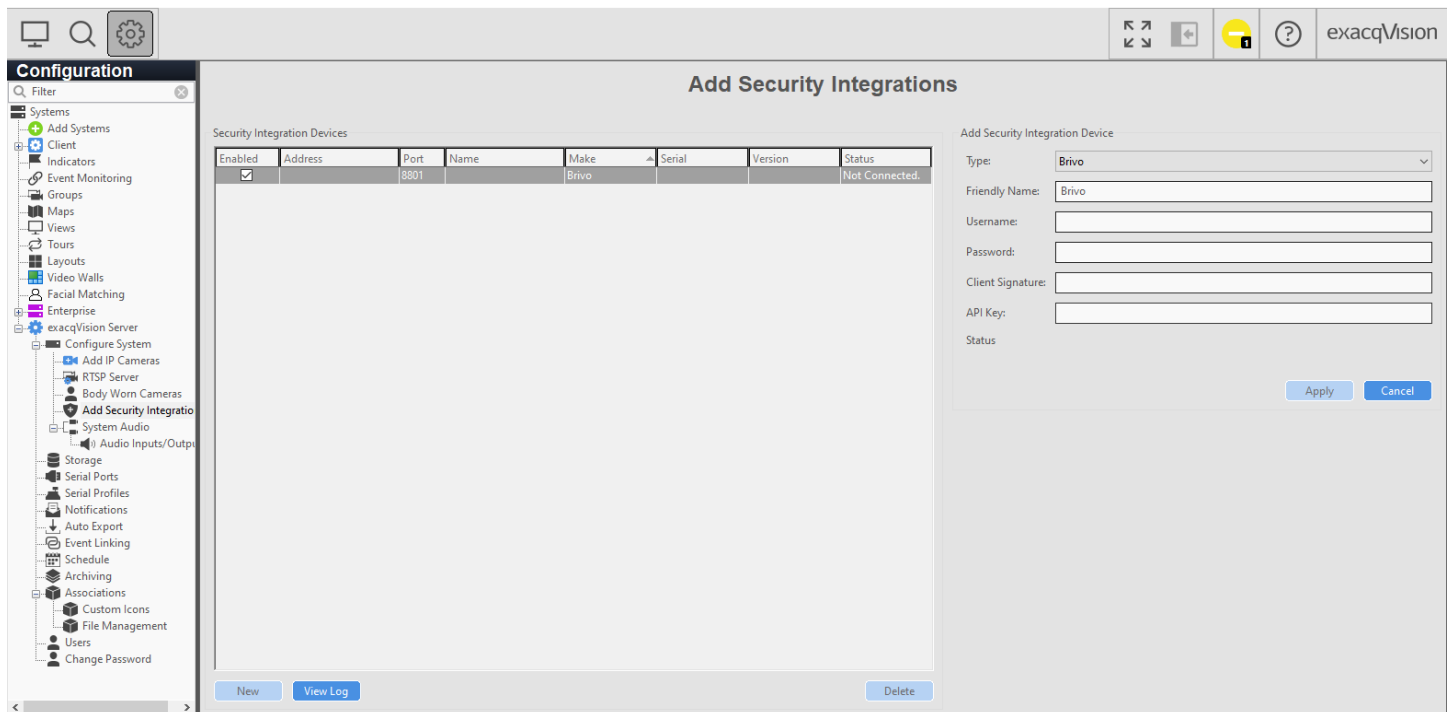
Here you will add your Brivo control panel hardware and configure doors, etc.



exacqVision Configuration

Open the exacqVision client and navigate to Server > Configure System > **Add Security Integrations** from the tree menu on the left.

1. Click **New**
2. Select **Brivo** from the Type drop down box
3. **Friendly Name:** This field allows you to rename your panel to suit your needs.
4. **Username:** Use your Brivo **Administrator ID** and NOT your email address.
5. **Password:** Use the same password you used for <https://access.brivo.com>
6. **Client Signature:** This requires both your *Client ID* and *Client Secret*. You will enter them into the text field in exacqVision in the format of **ClientID:ClientSecret** . Do not forget the colon in between them.
NOTE: This requires API access that is granted by Brivo. Please contact [Brivo Support](#) for assistance.
7. **API Key:** This is the API key obtained from Brivo.
8. Click **Apply** to connect your integrated Brivo system.



Contact info and Support

Brivo Support (Technical Support, Customer Service, Sales, and more)

<https://www.brivo.com/about/contact-us/>

Exacq Support (Technical Support, Training tools, and more)

<https://exacq.com/support/>