

Overview

The purpose of this integration guide is to demonstrate the process of integrating Kantech EntraPass access control system with exacqVision VMS system.

Minimum Software version requirements

- exacqVision Server version 5.8.2 or later with Professional license
- Entrapass Corporate Edition version: 6.01 or later

Tested and Supported Version

Kantech Entrapass	ExacqVision Server
8.61.184	22.12
8.30.05	21.09
8.23.22	20.03, 20.06, 20.09, 20.12, 21.03
8.20.38	19.12
8.10.78	19.06, 19.09, 19.12
8.00.32	19.03
7.51.02	9.6, 9.8

Installation

Prepare the exacqVision server

- Create an account with administrator privileges on the exacqVision server to be used by EntraPass.
- Note the IP address of the machine that exacqVision server is running on.

Install Entrapass (Kantech Onboard Systems)

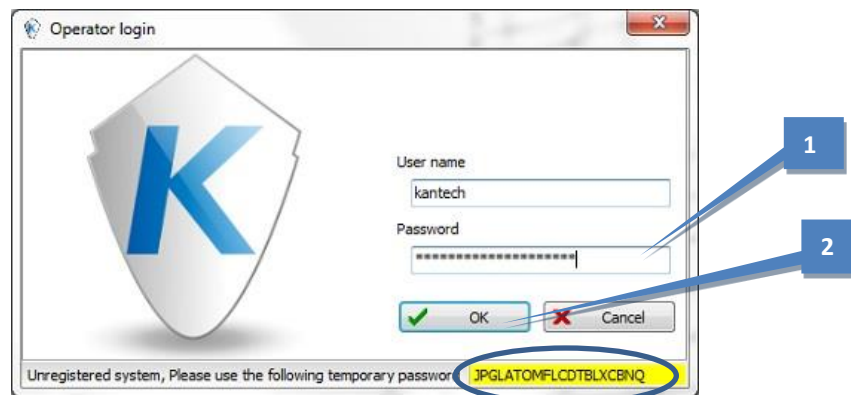
Install EntraPass as directed in the EntraPass installation directory folder (**DOCUMENT**). These documents can also be found in the “C:\Program Files (x86)\Kantech\Server_CE\Document” folder after installation. See our Kantech Onboard Installation Guide found [here](#) for more info.

Downloaded Entrapass – Installation process

Follow the manuals provided by Kantech in the installation directory folder mentioned above. Run **Setup.exe** and follow all prompts through the process. Contact [Kantech Support](#) for more information.

After EntraPass is installed, the installer can log in to the un-registered version for setting up the integration.

Double-click the icon on the Desktop to launch EntraPass:



1. Enter the automatically generated password found highlighted in yellow.
2. Click OK.

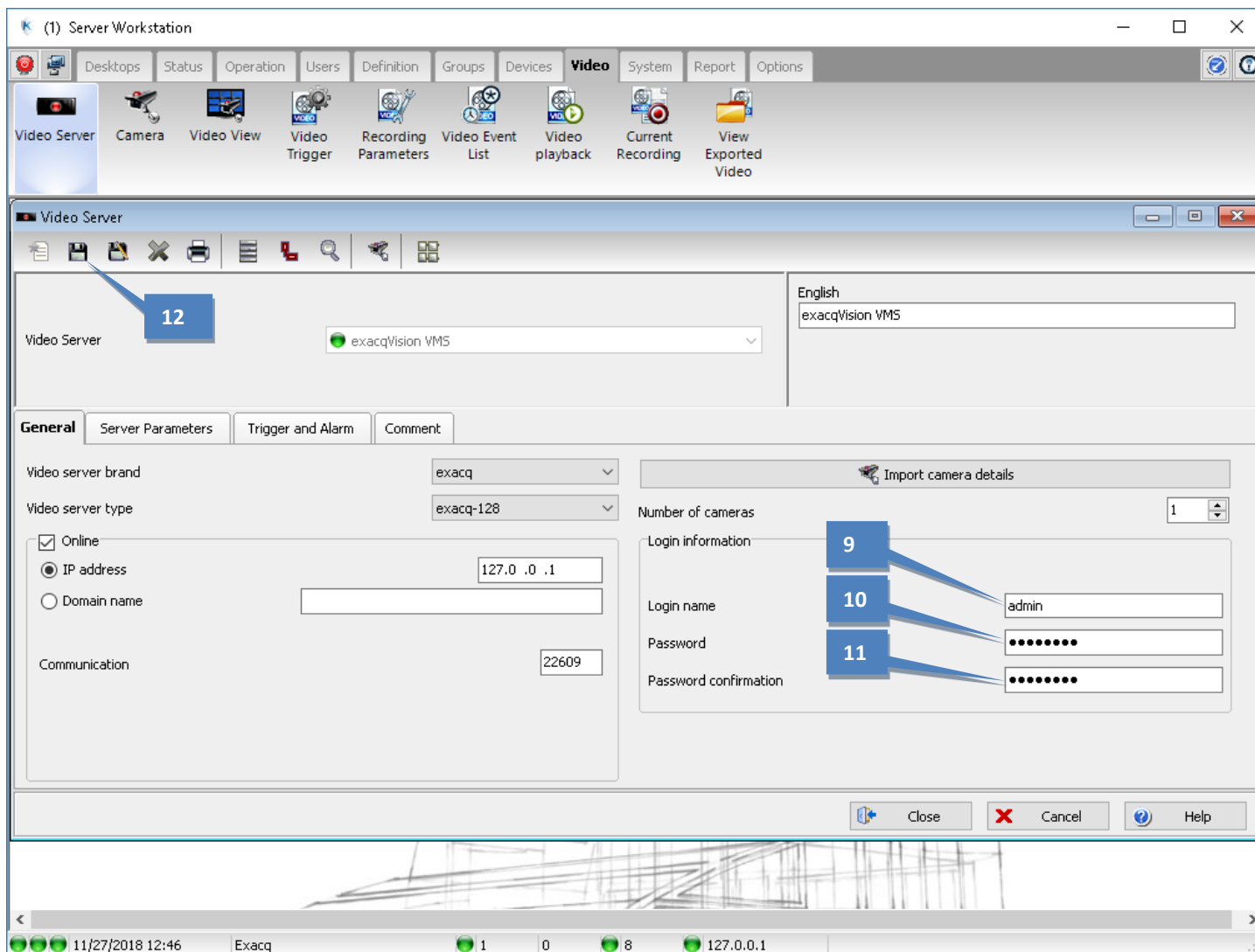
Configuring an exacq VMS

1. Select the Video tab.
2. Click Video Server.
3. Click the New icon.
4. Enter a name.
5. Select "exacq" from the Video Server Brand drop-down list.
6. Select the approximate number of cameras connected to the exacqVision VMS from the Video Server Type drop-down list.
7. Enter the IP address of the exacqVision server.
8. In the "Server Parameters" tab, set the time zone for the ExacqVision server as needed. (This will default to the Windows System time zone of the EntraPass server.)

The screenshot displays the 'Server Workstation' application interface. The 'Video' tab is selected in the top menu. The 'Video Server' window is open, showing a list of video servers. The 'New' icon is clicked to add a new video server. The 'Video Server' dialog box is shown with the 'General' sub-tab selected. The 'Video server brand' dropdown is set to 'exacq'. The 'Video server type' dropdown is set to 'exacq-128'. The 'Number of cameras' is set to 1. The 'Login information' section shows 'Login name' as 'admin', 'Password' as '*****', and 'Password confirmation' as '*****'. The 'Communication' section shows 'IP address' as '127.0.0.1' and 'Communication' as '22609'. The 'Server Parameters' tab is also visible, showing a list of servers with columns for Name, Brand, Type, IP, and Port. The status bar at the bottom shows the date and time as 11/27/2018 12:46 and the server name as Exacq.

Configuration continued....

9. Enter the username of the account that was created on the exacqVision server for use with EntraPass.
10. Enter the password of this account.
11. Confirm the password.
12. Click Save.



(1) Server Workstation

Desks Status Operation Users Definition Groups Devices **Video** System Report Options

Video Server Camera Video View Video Trigger Recording Parameters Video Event List Video playback Current Recording View Exported Video

Video Server

English
exacqVision VMS

Video Server exacqVision VMS

General Server Parameters Trigger and Alarm Comment

Video server brand exacq

Video server type exacq-128

☒ Online
☒ IP address 127.0 .0 .1
☐ Domain name

Communication 22609

Import camera details

Number of cameras 1

Login information

9 Login name admin

10 Password

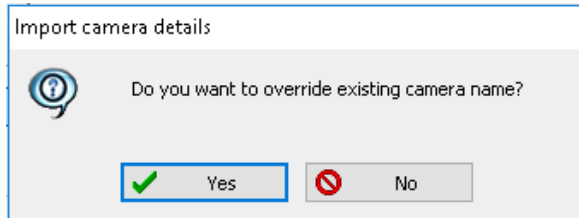
11 Password confirmation

Close Cancel Help

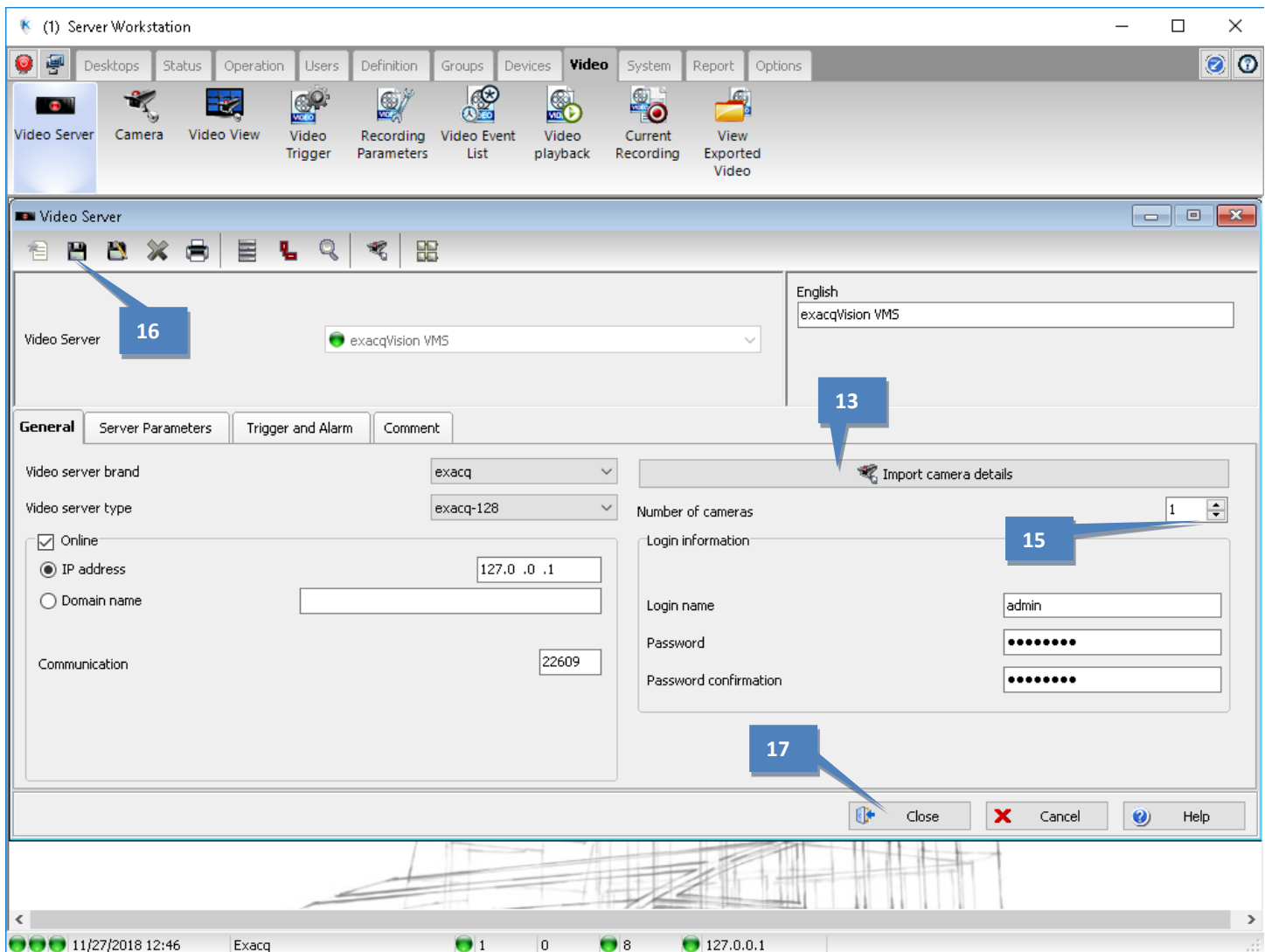
11/27/2018 12:46 Exacq 1 0 8 127.0.0.1

To import cameras from the exacqVision server;

13. Click Import Camera Details.
14. When prompted, choose Yes to add cameras as they are named within ExacqVision.

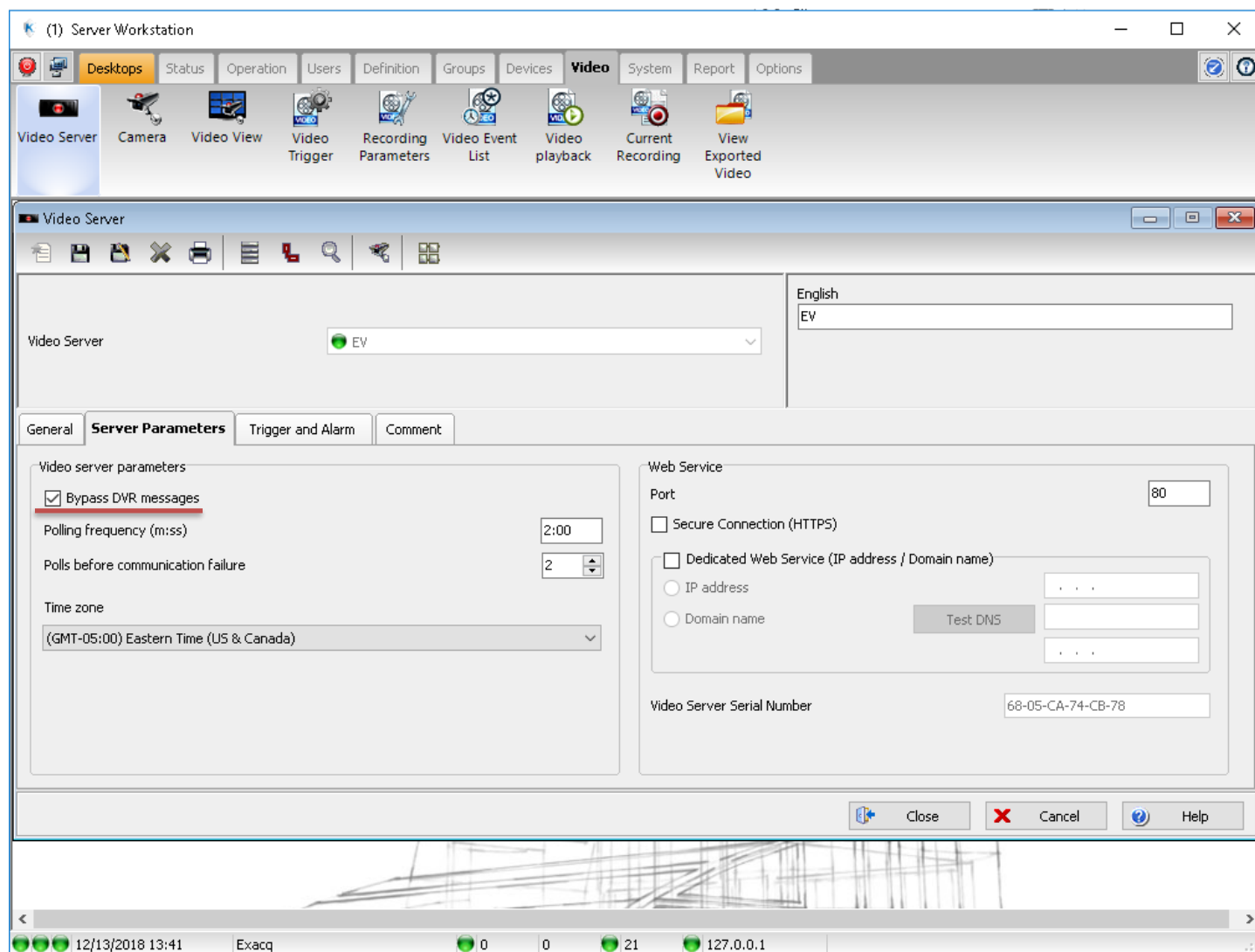


15. Verify that the number of cameras detected is correct (in this example, 1 was detected).
16. Click Save
17. Click Close.



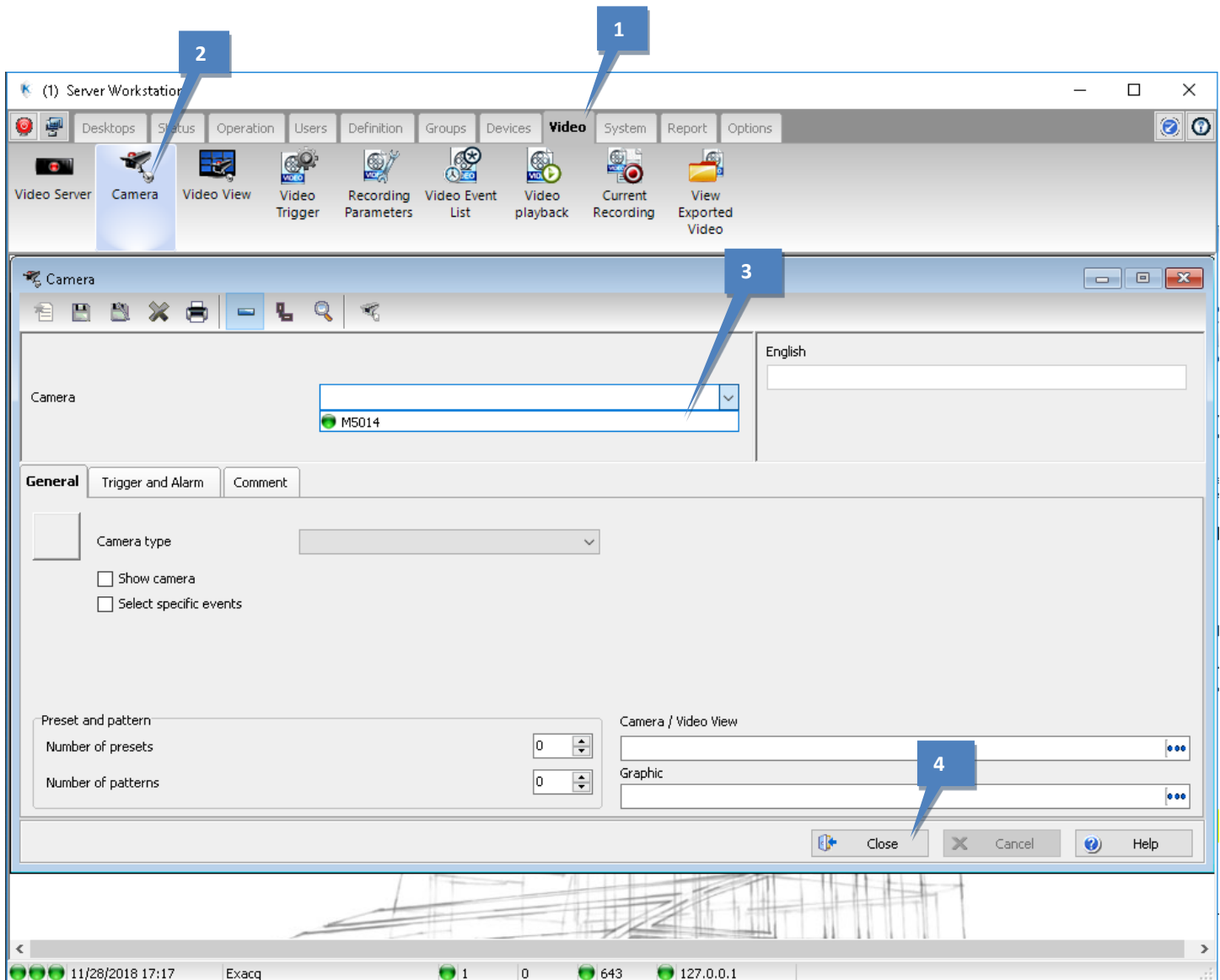
Note:

To limit the overflow of notifications in the event list, you can select the “Bypass DVR Messages” option in the Server Parameters tab. This is entirely optional.



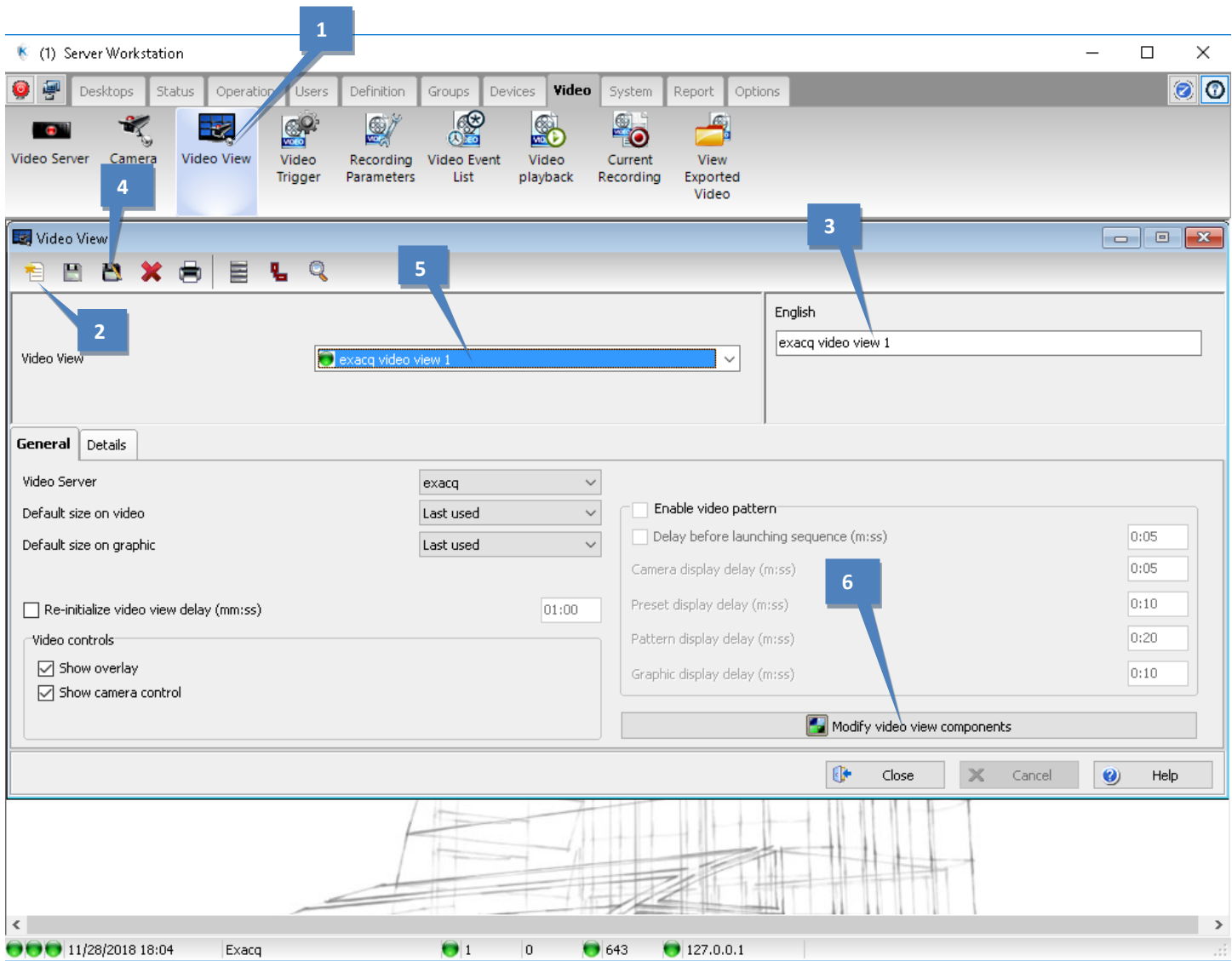
Verify camera detection

1. Select the Video tab.
2. Click Camera.
3. Verify that the cameras are correctly displayed in the Camera drop down list.
4. Click Close.

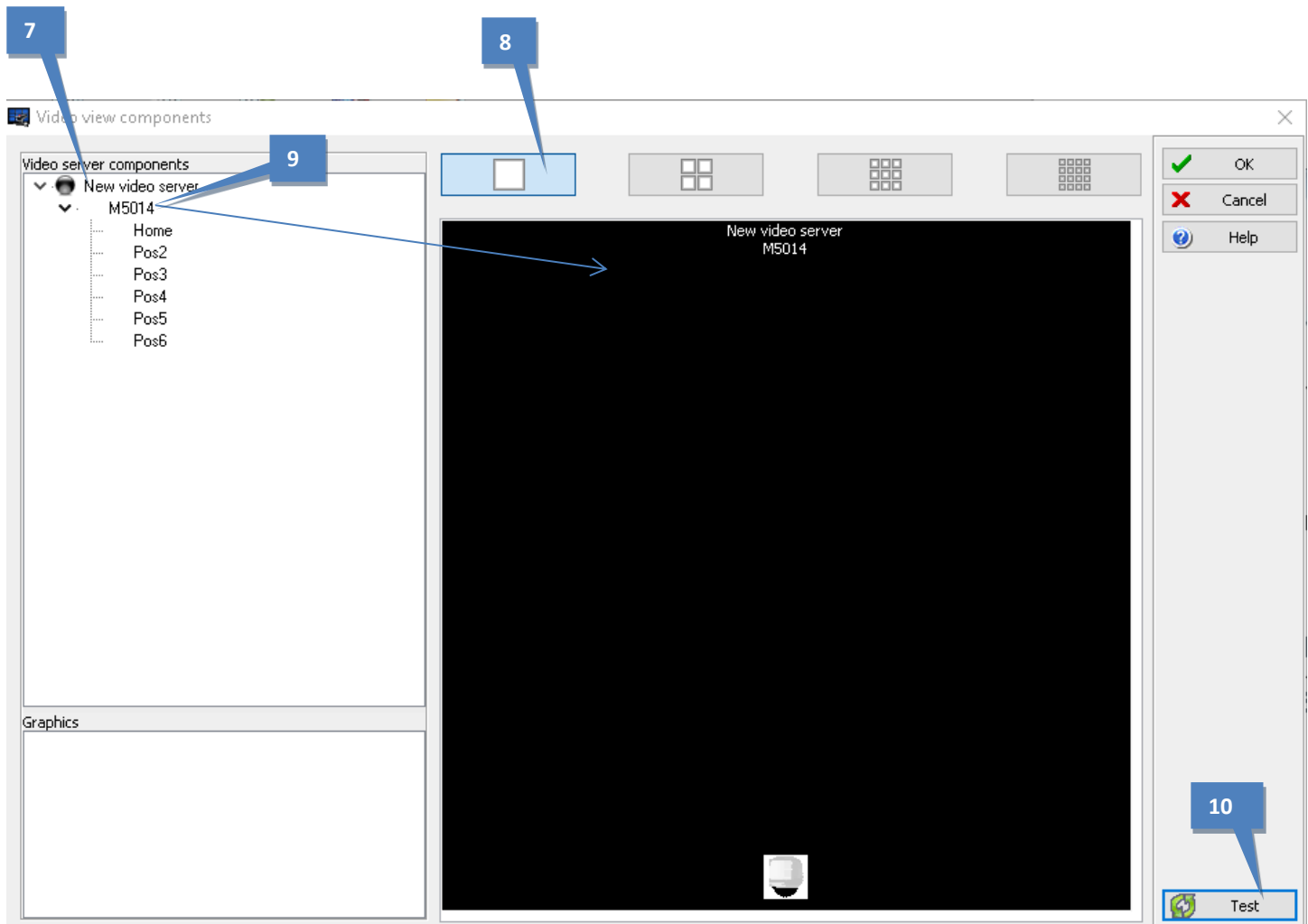


Create a view and verify live video

1. Click Video View.
2. Click New.
3. Enter a name.
4. Click Save.
5. The name is now displayed in the Video View field.
6. Click Modify Video View Components.

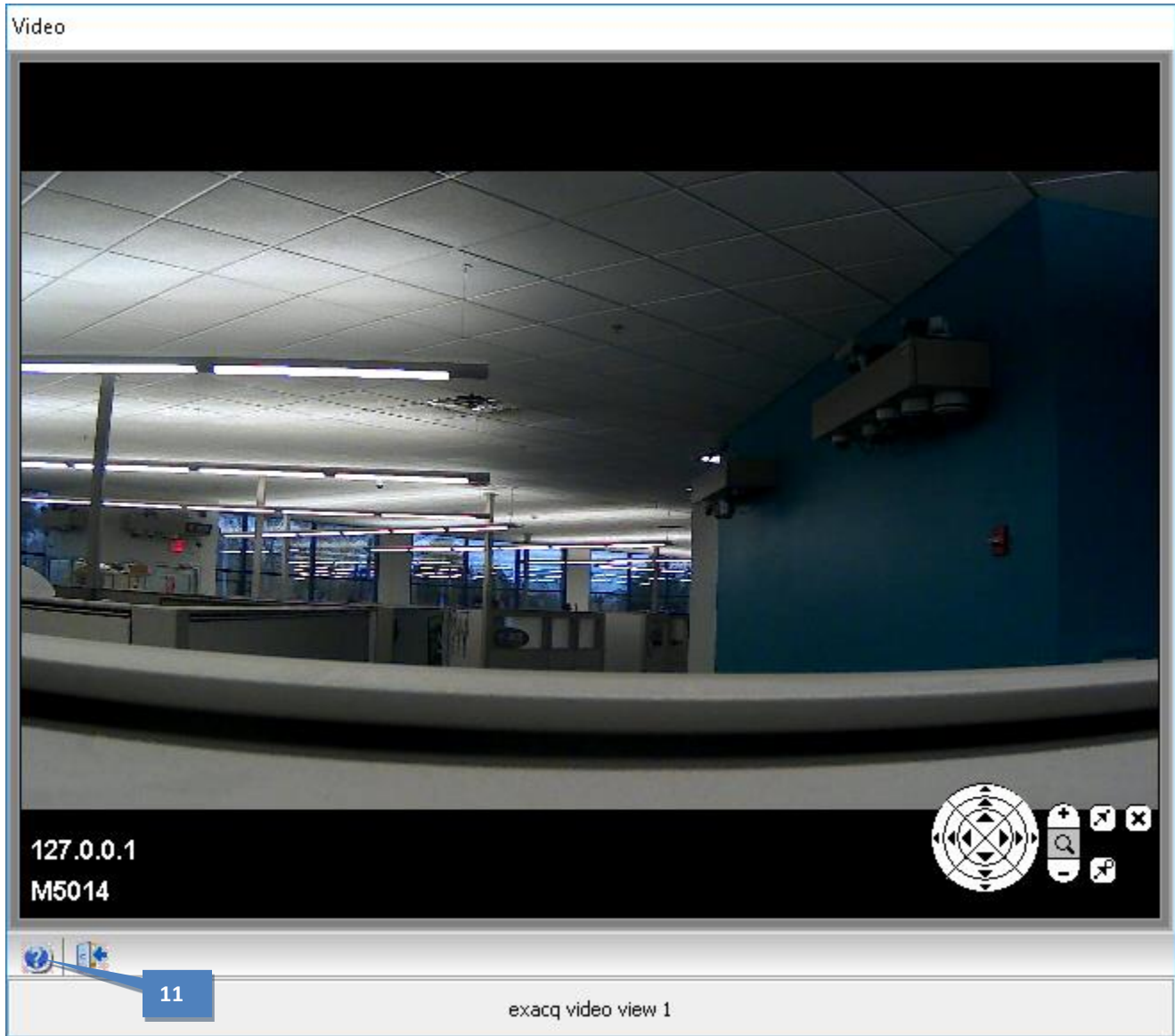


7. On the Video View Components page, verify that the list of components is correct.
8. Choose an appropriate number of camera panes.
9. Click and drag some cameras onto the panes.
10. Click Test.



A window displaying live feeds is displayed. This verifies that the cameras are configured correctly.

11. Click the door icon at the bottom to close.

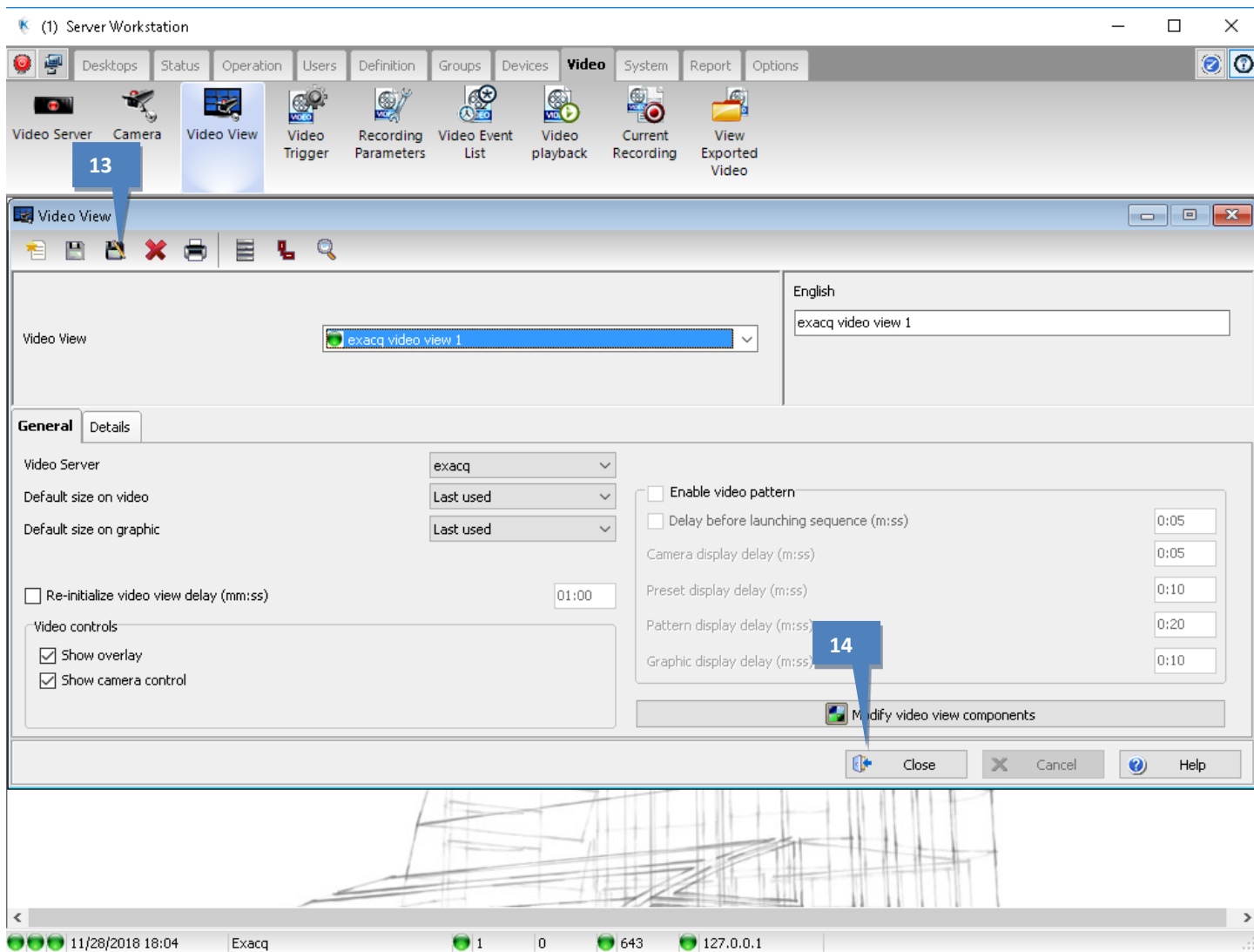


12. Click OK on the Video view components window



13. Click Save.

14. Click Close.

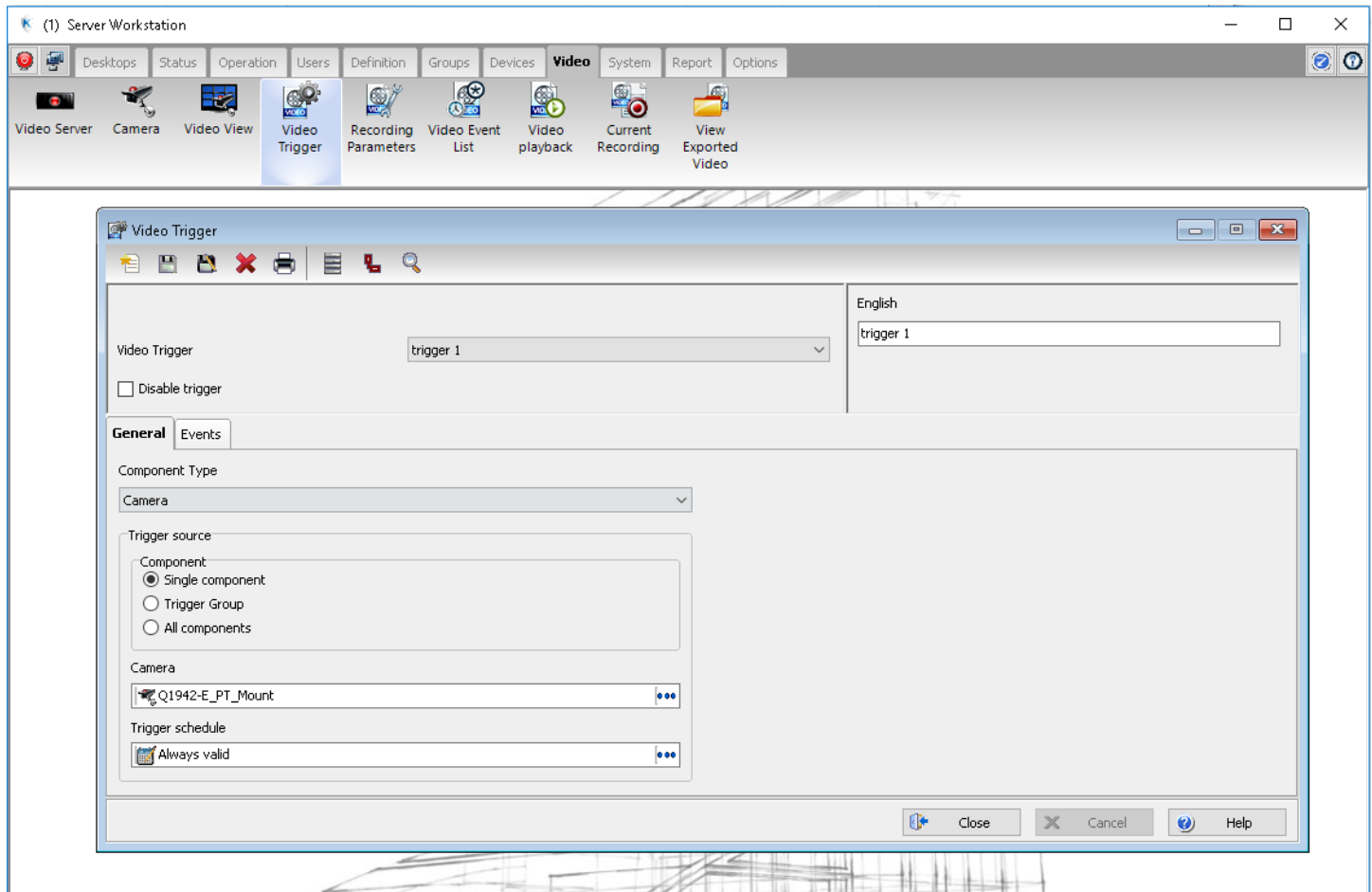


Conclusion

Now the exacqVision system has been integrated with Kantech Entrapass. Many features are now available to you, including configuring event triggers in Entrapass that will create soft triggers in the exacqVision client. These soft triggers can be used to implement any of the event codes shown at the bottom of this document.

Creating Soft Triggers

When **Video Triggers** are configured in the Entrapass Workstation, a soft trigger is automatically created in exacqVision. This will only appear once your chosen component event is triggered. Check the *Event* tab for options for each *Component* available.



For example, setting up a “*Camera Motion Activated*” event in Kantech Entrapass will result in a soft trigger appear in *Event Linking* in the exacqVision Client like you see here.

(**Note:** The Event Source, automatically named here as “ENTRAPASS_1”, can be renamed using the Edit button under the Event Source section.)

Event Linking

Log	Event Type	Event Source	At Least	Action Type	Action Target	Pre Trigger	Post Trigger	Status
<input checked="" type="checkbox"/>	Soft Trigger	ENTRAPASS_1	Immediate	Record Video	Q1942-E_PT_Mount	5	5	Off

Event Type
Video Motion
Video Loss
Input Trigger
Serial Port
Serial Profile
Health
IP Camera Connection
Soft Trigger
Time Trigger
Analytics
Source Group
Outbound Connection
Security Integration Connection
Security Integration Alert
Security Integration Alarm
Serial Port Connection

Event Source
ENTRAPASS_1
New Edit Delete

☐ Lasts at Least 1 seconds

Action Type
Log Event
Record Video
Record Audio
Output Trigger
Notify
Auto Export
PTZ Preset
Security Trigger
Webhook
Analyze Video

Action Target
Q1942-E_PT_Mount

Pre Trigger
5 Seconds

Post Trigger
5 Seconds

Log Settings
Maximum Days to Keep Logged Events: 30
New Delete Apply Cancel

More On Installation and Setup

Kantech Entrapass Corporate Edition User Manuals found [HERE](#).

Also see our Installation Guide (Kantech OnBoard systems only) found [HERE](#).

Contact info and Support

Kantech Support (Technical Support, Customer Service, Sales, and more)

<http://www.kantech.com/Support/ContactDefault.aspx>

Exacq Support (Technical Support, Training tools, and more)

<https://exacq.com/support/>

exacqVision Event Triggering

Any access control event in EntraPass can be programmed to actuate soft triggers in exacqVision. If the soft trigger does not exist on the exacqVision server, or if it has been deleted, EntraPass will create a new soft trigger and associated event link to start the recording. For more detail on how to configure these, refer to Kantech Support or the Entrapass Corporate Edition user manual.

Access - Door unlocked	Acknowledge
Access - Second entrance	Acknowledge suspended
Access denied	Acknowledge time-out
Access denied - Alarm system armed	Add site to connection list
Access denied - Area full	Alarm duress
Access denied - Area not clear	Alarm duress on door
Access denied - Bad access level	Alarm key alarm
Access denied - Bad card status	Alarm key alarm restore
Access denied - Card already busy	Alarm log added
Access denied - Card expired	Alarm message flag
Access denied - Card lost or stolen	Alarm message unflag
Access denied - Card not load in controller	Alarm supervision - reader found
Access denied - Card pending	Alarm system activated
Access denied - Card unknown	Alarm system armed
Access denied - Disabled tenant	Alarm system armed (Alarm level 1 active)
Access denied - Door armed - alarm interface	Alarm system armed (Alarm level 2 active)
Access denied - Door manually disabled	Alarm system deactivated
Access denied - Dual custody	Alarm system disarmed
Access denied - Interlock active	Alarm system force arming device alarm reported
Access denied - Invalid access schedule	Alarm system input shunted - entry delay
Access denied - Keypad disabled	Alarm system input unshunted - entry delay
Access denied - Keypad locked	Alarm system manually armed
Access denied - local area full	Alarm system manually disarmed
Access denied - Minimum passback delay	Alarm system modified
Access denied - Not enough cards	alarm system not ready - alarm interface
Access denied - Number supervisor/area	Alarm system postpone count zero
Access denied - Passback bad location	alarm system ready - alarm interface
Access denied - Reach card count (Card count limit reached)	Alarm system relay activated
Access denied - Reader or keypad locked	Alarm system relay deactivated
Access denied - Supervisor level required	Application automatic update
Access denied - Tenant card unknown	Archive backup automatic
Access denied - Tenant expired	Archive backup automatic - Completed
Access denied - Tenant not loaded in KTES	Archive backup automatic - Failed
Access denied - Tenant pending	Archive backup by operator
Access denied - Waiting for approval	Archive merged from redundancy server
Access denied - Waiting second card	Archive restored by operator
Access denied by tenant	Archive restored from redundancy server
Access door unlocked (Tenant)	Area closed
Access granted	Area definition modified
Access granted - Passback bad location	Area full
Access granted (Tenant)	Area group modified
Access granted by tenant	Area not full
Access level definition modified	Area opened
Access level group definition modified	Area status request
Access process completed	Arming aborted
Account modified	Arming postponed

Automatic report requested
 Auxiliary action by tenant
 Auxiliary output definition modified
 Bad code on keypad
 Bad login on Server
 Bad Login on Smartlink
 Bad Login on Workstation
 Bad sequence - guard tour
 Badging layout modified
 Begin reloading, GSI procedure
 Begin reloading, Server procedure
 Beginning of a guard tour
 Billing report created
 Broadcast IP device succeeded waiting for heartbeat
 Browse Video Vault
 Call aborted by visitor
 Calling tenant
 Camera advanced motion alarm activated
 Camera advanced motion alarm restored
 Camera alarm activated
 Camera alarm restored
 Camera light alarm activated
 Camera light alarm restored
 Camera modified
 Camera motion alarm activated
 Camera motion alarm restored
 Camera museum activated
 Camera museum restored
 Camera override activated
 Camera override restored
 Camera perimeter activated
 Camera perimeter restored
 Camera tamper alarm activated
 Camera tamper alarm restored
 Camera text alarm activated
 Camera video lost
 Camera video restored
 Cannot process card on Card Gateway
 Card Access Group modified
 Card access level expired
 Card Archive modified
 Card definition modified
 Card expired
 Card filter modified
 Card location in bad area
 Card pending on service
 Card position manually modified
 Card traced
 Card Type modified
 Cards counter In - Out
 Cards exported
 Change automatic backup parameters

Change badge printout credential
 Change card format
 Change card label
 Change keypad family
 Change log printer
 Change MAC account billing information
 Change master password
 Change operating language
 Change priority from connection list
 Change programmables messages
 Change Sound and Video parameters
 Change system parameters
 Clean Server database
 Clear connection list
 Cluster modified
 Connect this site next
 Connection for site synchronisation
 Controller AC power failed
 Controller AC power restored
 Controller Auxiliary power failure
 Controller Auxiliary power restored
 Controller battery power failure
 Controller battery power restored
 Controller cards list cancelled by operator
 Controller cards list requested by operator
 Controller cards moved by operator
 Controller communication failed
 Controller communication failure with Aurora
 Controller communication failure with MCU
 Controller communication restored
 Controller communication restored with Aurora
 Controller communication restored with MCU
 Controller date time RTC reading failure
 Controller date time RTC reading restore
 Controller DC power failed
 Controller DC power restored
 Controller definition modified
 Controller detailed status requested by operator
 Controller eeprom reading failure
 Controller execute program memory startup
 Controller execute program parity failure
 Controller firmware
 Controller firmware reload start
 Controller group definition modified
 Controller group hard reset by operator
 Controller group reload by operator
 Controller group soft reset by operator
 Controller hard reset by operator
 Controller lock power failed
 Controller lock power restored
 Controller module AC power failure
 Controller module AC power restored

Controller module auxiliary power failure
 Controller module auxiliary power restored
 Controller module battery power failure
 Controller module battery power restored
 Controller module bell output failure
 Controller module bell output restored
 Controller module combus power failure
 Controller module combus power restored
 Controller module communication failure
 Controller module communication restore
 Controller module data received
 Controller module end transmission
 Controller module failure
 Controller module ground detect alarm
 Controller module ground detect restored
 Controller module input class A alarm
 Controller module input class A alarm restored
 Controller module input class A trouble
 Controller module input class A trouble restored
 Controller module input class B alarm
 Controller module input class B alarm restored
 Controller module input class B trouble
 Controller module input class B trouble restored
 Controller module off line
 Controller module on line
 Controller module phone line #1 failure
 Controller module phone line #1 restored
 Controller module phone line #2 failure
 Controller module phone line #2 restored
 Controller module restored
 Controller module tamper alarm
 Controller module tamper restored
 Controller module trouble
 Controller module trouble restore
 Controller module/combos power failure
 Controller module/combos power restored
 controller not assigned requested by operator
 Controller or module not assigned
 Controller passback forgiven by operator
 Controller power supply restored
 Controller power supply trouble
 Controller pre-alarm AC power failure
 Controller pre-alarm AC power restored
 Controller reader power control restored
 Controller reader power control trouble
 Controller reader power failure
 Controller reader power reset by operator
 Controller reader power restored
 Controller reader/keypad unlocked by operator
 Controller reload failure
 Controller reloaded by operator
 Controller slave communication failure

Controller slave communication restored
 Controller soft reset by operator
 Controller startup
 Controller successfully reloaded
 Controller trouble
 Controller trouble restored
 Create a daypass card
 Data backup automatic
 Data backup automatic - Completed
 Data backup automatic - Failed
 Data backup by operator
 Data merged from redundancy server
 Data restored by operator
 Data restored from redundancy server
 Date and time modified
 Decrement card counter
 Device connection denied, Unknown MAC address
 Device low battery 4204
 Device reloading data by operator
 Disconnect modem
 Disconnect remote site
 Door alarm - alarm interface
 Door alarm on re-lock
 Door alarm restored- alarm interface
 Door armed - alarm interface
 Door armed by operator
 Door closed/normal condition
 Door contact disabled by operator
 Door contact disabled by operator
 Door contact enabled by operator
 Door contact returned to schedule by operator
 Door definition modified
 Door Disarmed - alarm interface
 Door disarmed by operator
 Door entry delay end - alarm interface
 Door entry delay start - alarm interface
 Door exit delay end - alarm interface
 Door exit delay start - alarm interface
 Door forced alarm
 Door forced alarm restore
 Door forced open
 Door forced open restored
 Door group armed by operator
 Door group contact disabled by operator
 Door group contact disabled by operator
 Door group contact enabled by operator
 Door group contact returned to schedule by operator
 Door group definition modified
 Door group disarmed by operator
 Door group lock by input
 Door group locked by operator
 Door group one time access by operator

Door group returned to schedule by operator	External command
Door group temporarily unlocked by operator	External NCC stopped by operator
Door group unlock by input	Failed to reach IP device
Door group unlocked by operator	Failsoft mode off
Door lock by alarm system armed	Failsoft mode on
Door lock by input	Fire key alarm
Door lock device failure	Fire key alarm restore
Door lock device normal condition	Floor definition modified
Door locked by alarm system armed	Floor group activated by input
Door locked by operator	Floor group activation by input denied
Door locked by schedule	Floor group definition modified
Door one time access by operator	Floor group manually disabled
Door open too long	Floor group manually enabled
Door Reader keypad activation by keypad key	Graphic definition modified
Door reload	GSI definition modified
Door returned to schedule by operator	Guard tour alarm
Door temporarily unlocked by operator	Guard tour definition modified
Door toggle by operator	Guard tour late time delay modified
Door unlock by input	Guard tour scheduled
Door unlocked by event	Guard tour sequence modified
Door unlocked by operator	Guard tour station
Door unlocked by schedule	Guard tour station late
Door unlocked temporarily by event	Hard reset controller
Double swipe action denied	Historical report definition modified
Double swipe action granted	Holiday definition modified
Duress alarm	Home automation trouble
Elevator door floor group disabled by operator	Increment card counter
Elevator door floor group enabled by operator	Initialize modem
Elevator door group group floor group disabled by operator	Input activated
Elevator door group group floor group enabled by operator	Input activated 'Return to service'
Elevator interface failure	Input continuous supervision by operator
Elevator interface override disabled	Input deactivated
Elevator interface override enabled	Input definition modified
Elevator interface restore	Input group continuous supervision by operator
End reloading, GSI procedure	Input group definition modified
End reloading, Server procedure	Input group return to normal by operator
End Server	Input group return to schedule by operator
End Workstation	Input group reverse condition by operator
End Workstation Serveur abnormal disconnection	Input group shunted by input
End Workstation Serveur normal disconnection	Input group shunted by operator
Ending of a guard tour	Input group shunted temporarily by operator
Enroll a connection on Server	Input group unshunted by input
Entry delay	Input in alarm
Entry delay expired	Input in alarm 'Return to service'
Error reloading, GSI procedure	Input in pre-alarm
Error reloading, Server procedure	Input in trouble
Event buffer full at 70 percent	Input restored or in normal condition
Event buffer overflow	Input return to normal by operator
Event parameter definition modified	Input return to schedule by operator
Event relay definition modified	Input reverse condition by operator
Exit delay	Input shunt toggle by operator
Export video request	Input shunted by input

Input shunted by operator	Last station in guard tour
Input shunted on disarm - alarm interface	Login on Server
Input shunted on entry delay - alarm interface	Login on Smartlink
Input shunted on exit delay - alarm interface	Login on Workstation
Input shunted temporarily	Logout on Server
Input shunted temporarily by operator	Logout on Smartlink
Input tamper in alarm	Logout on Workstation
Input tamper restored	Loop communication failure
Input trouble restored	Loop communication restore
Input unshunted	Loop communication trouble
Input unshunted by input	Loop definition modified
Input unshunted on disarm - alarm interface	Macro maker manually executed
Input unshunted on entry delay - alarm interface	Macro maker modified
Input unshunted on exit delay - alarm interface	Manual log add by operator
Input unshunted temporarily	Master Account modified
Instruction definition modified	Message view definition modified
Invalid family card	Modem site bad UCK
Invalid floor selection	Modem site callback failed
Invalid keypad code	Modem site callback on buffer
IP device - Update platform	Modem site callback on schedule
IP device communication failed	Modem site callback priority call
IP device communication restored	Modem site connection
KAP Expiry Reminder	Modem site connection failed
KT-400 firmware manual flashing by operator	Modem site connection time
KTES alarm duress	Modem site disconnection
KTES call not initialize by do not disturb option	Modem site dial
KTES custom language reload	Modem site fail to report
KTES local database modified	Modem site first initialisation
KTES VUI programming access denied	Modem site invalid command
KTES VUI programming access granted	Modem site wait for callback
KTES VUI programming exit	Modify an enroll connection on Server
KTES VUI programming invalid keypad code	Muster report modified
KT-NCC - AC power failure	NCC communication failed
KT-NCC - AC power restored	NCC communication restored
KT-NCC - AC power supply trouble	NCC program updating
KT-NCC - Auxiliary power failure	New video search
KT-NCC - Auxiliary power restored	No dial tone
KT-NCC - Battery not connected	No response from tenant
KT-NCC - Battery power critical	NTM definition modified
KT-NCC - Battery power failure	Operator definition modified
KT-NCC - Battery power restored	Operator disabled
KT-NCC - Event buffer normal	Panel AC trouble
KT-NCC - Event buffer overflow	Panel AC trouble restore
KT-NCC - Hard reset by operator	Panel Battery trouble
KT-NCC - Relay activated by an event	Panel Battery trouble restore
KT-NCC - Relay deactivated by an event	Panel Communication failure
KT-NCC - Relay temporarily activated by an event	Panel Communication restore
KT-NCC - Shutdown on critical low battery	Panel component modified
KT-NCC - Soft reset by operator	Panel modified
KT-NCC - Tamper in alarm	Partition alarm
KT-NCC - Tamper restored	Partition alarm key alarm
KT-NCC - Update platform CE	Partition alarm key alarm restore

Partition fire key alarm	Relay activated by open area
Partition fire key alarm restore	Relay activated by operator
Partition manually armed	Relay activated by schedule
Partition police key alarm	Relay deactivated after temporarily action
Partition police key alarm restore	Relay deactivated by alarm system
Phone line busy	Relay deactivated by an event
Phone line failure	Relay deactivated by close area
Phone line failure	Relay deactivated by input
Phone line restore	Relay deactivated by not full area
Phone line restored	Relay deactivated by operator
Playback request	Relay deactivated by schedule
Police key alarm	Relay definition modified
Police key alarm restore	Relay group activated by alarm system
Postal lock request denied by interlock	Relay group activated by an event
Postal lock request denied by schedule	Relay group activated by full area
Postal lock request granted	Relay group activated by input
Postponement delay manually modified	Relay group activated by open area
Pre-Alarm on Door Open Too Long	Relay group activated by operator
Programmable message #1	Relay group deactivated by alarm system
Programmable message #10	Relay group deactivated by an event
Programmable message #2	Relay group deactivated by close area
Programmable message #3	Relay group deactivated by input
Programmable message #4	Relay group deactivated by not full area
Programmable message #5	Relay group deactivated by operator
Programmable message #6	Relay group definition modified
Programmable message #7	Relay group returned to schedule by operator
Programmable message #8	Relay group temporarily activated by alarm system
Programmable message #9	Relay group temporarily activated by an event
Quick report request by operator	Relay group temporarily activated by input
Reader disabled by operator	Relay group temporarily activated by operator
Reader enabled by operator	Relay returned to schedule by operator
Reader group disabled by operator	Relay temporarily activated by alarm system
Reader group enabled by operator	Relay temporarily activated by an event
Reader low power	Relay temporarily activated by door access extended delay
Reader low power restored	Relay temporarily activated by input
Reader or Keypad locked	Relay temporarily activated by keypad key
Reader or Keypad unlocked	Relay temporarily activated by operator
Reader restarted	Relay toggle by operator
Reader's antenna - back to back voltage	Remaining time remove by operator
Reader's antenna - no voltage	Remove from connection list
Reader's antenna - normal voltage	Report aborted
Rebuild Card Last Transaction file	Report aborted not enough free disk space
Recording parameters modified	Report request by operator
Recording requested by operator	Report successfully completed
Redundancy Server Shutdown	Request to arm denied - alarm interface
Registration connection failed	Request to arm granted - alarm interface
Registration connection granted	Request to disarm - alarm interface
Registration requested	Request to exit denied
Relay activated by alarm system	Request to exit denied by Interlock
Relay activated by an event	Request to exit granted
Relay activated by full area	Request to postpone denied - alarm interface
Relay activated by input	Request to postpone granted - alarm interface

Reset global interlock by operator	Timeout on manually unlock
Reset modem	Timeout on postal lock request
Roll call report modified	Timeout on REX
Schedule definition modified	Timeout on waiting second card
Security level definition modified	TLM Line 1 trouble
Server Communication Failed	TLM Line 1 trouble restore
Server Communication Restored	TLM Line 2 trouble
Server notification	TLM Line 2 trouble restore
Server shutdown by workstation	Transfert firmware files
Set card counter	Trigger group modified
Site definition modified	Trigger modified
Smartlink command	Triple swipe action denied
Smartlink operator switch to an account	Triple swipe action granted
Smartlink security issue	Two-wire smoke alarm
Soft reset controller	Two-wire smoke alarm restore
Start recording by video trigger	Two-wire smoke trouble
Start recording requested by operator	Two-wire smoke trouble restore
Start Server	Unlock overridden by door armed
Start Workstation	Update all site
Start Workstation Serveur connection	Update data to site
Stop recording by timer	Valid floor selection
Stop recording by video trigger	Verify Database Hierarchy On Server
Stop recording requested by operator	Verify Database Index On Server
Supervision restored - reader found	Verify Database Integrity On Server
Swap database description	Verify database integrity on Workstation
System Bell alarm in trouble	Verify Database Link On Server
System Bell alarm trouble restore	Video event backup automatic
System status request	Video event backup automatic - Completed
System tamper	Video event backup automatic - Failed
System tamper restore	Video event backup by operator
Tamper switch in alarm	Video event merged from redundancy server
Tamper switch in alarm	Video event restored by operator
Tamper switch restored	Video event restored from redundancy server
Tamper switch restored	Video failed to saved
Tenant group modified	Video record modified
Tenant traced	Video sent to Video Vault by operator
Time and Attendance backup automatic	Video Server archive disabled by operator
Time and Attendance backup automatic - Completed	Video Server archive enabled by operator
Time and Attendance backup automatic - Failed	Video Server communication failed
Time and Attendance backup by operator	Video Server communication restored
Time and attendance entry	Video Server modified
Time and attendance exit	Video Server special report
Time and attendance manually modified	Video trigger modified
Time and attendance merged from redundancy server	Video Vault no more disk space
Time and attendance report modified	Video Vault reach disk space threshold
Time and Attendance restored by operator	Video View modified
Time and attendance restored from redundancy server	View active report
Time-out on access granted	View Command Log On Server
Timeout on access granted (Tenant)	View Connection On Server
Timeout on access granted by tenant	View current recording
Time-out on floor selection	View data explorer
Time-out on keypad	View Error Log On Server

View Workstation status
 Waiting for keypad
 Waiting second card
 Waterflow alarm
 Waterflow alarm restore
 Waterflow trouble
 Waterflow trouble restore
 Wireless button battery power failure
 Wireless button battery power restored
 Wireless button selection number
 Wireless key low battery trouble
 Wireless key low battery trouble restore
 Workspace modified
 Workstation lock by operator
 Workstation operator switch to an account
 Workstation unlock by operator
 Zone alarm
 Zone alarm restore
 Zone fault
 Zone fault restore
 Zone tamper
 Zone tamper restore