

1 Requirements

The DSX plug-in can be installed on an exacqVision system with an applicable license. This document assumes that WinDSX and exacqVision are already installed on their respective servers.

Minimum software requirements:

- exacqVision licensed server version 3.4 or later
- WinDSX version 3.7.52 or later

2 Installation

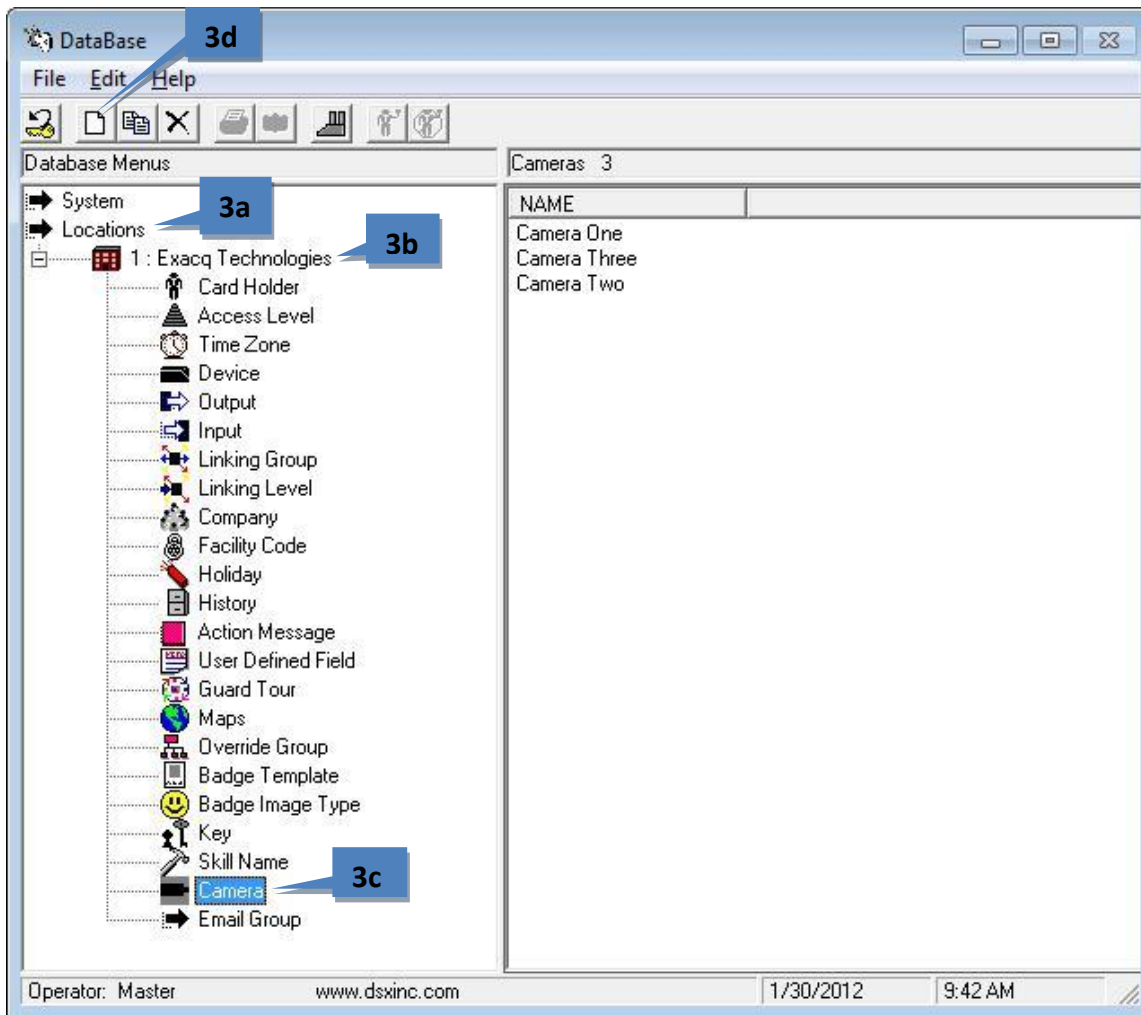
Before configuring WinDSX for use with the exacqVision System, complete the following steps:

1. Obtain a valid User ID and Password from the exacqVision server that will be used with WinDSX.
2. Obtain the IP address of the exacqVision system. Alternatively, you can use the domain hostname if the system is on the same domain as WinDSX.
3. Obtain the User ID and Password for the WinDSX Database/Server.
4. Download the exacqVision plug-in for WinDSX from <http://www.exacq.com/support/downloads.html>.
5. Proceed with the Configuration section on the following page.



3 Configuration

1. On the WinDSX server, install the exacqVision plug-in for WinDSX. Follow the onscreen prompts.
2. From the **Start** menu, select **All Programs, WinDSX**. Log in using the User ID and Password obtained previously.
3. Click the **Database** window:
 - a. Double-click **Locations**.
 - b. Double-click your location.
 - c. Click **Camera**.
 - d. Click on the **New** button in the menu to display the **New Camera** window.



4. On the **General** tab, enter the following information:
 - a. **Camera #:** This is generic, such as 1, 2, 3, and so on. It is not the same as the camera number on the exacqVision server.
 - b. **Name:** This can be any name that you want to assign to the camera.
 - c. **Camera Type:** Select **Exacq Technologies** from the drop-down list.

The screenshot shows the 'Cameras Camera One' dialog box with the 'General' tab selected. The 'Camera #' field contains '1', the 'Name' field contains 'Camera One', and the 'Camera Type' dropdown menu is set to 'Exacq Technologies'. Other fields include 'Camera Port' (0), 'List Order' (0), and 'Control Output' (....). There is a 'Notes' text area at the bottom and buttons for 'Previous', 'Next', 'Cancel', and 'OK'.

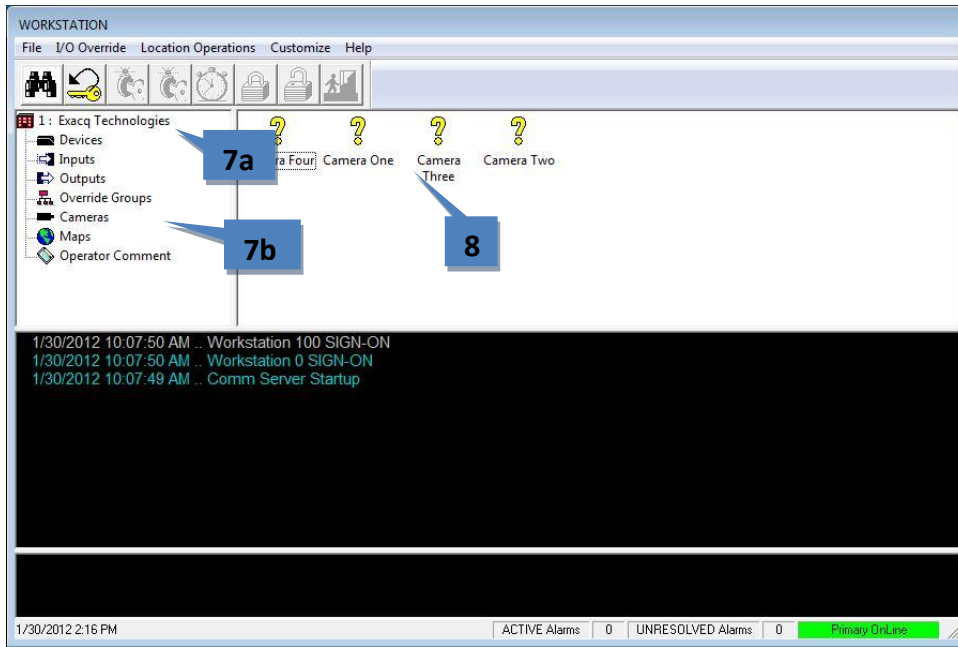
5. On the **Digital Video Camera** tab, enter the following information:
 - a. **DVR Server Name:** the IP address of the exacqVision server
 - b. **Assign Cameras:** the number of the exacqVision camera (numbering starts at zero)
 - c. **DVR Server User Logon:** the exacqVision user ID obtained previously
 - d. **DVR Server Password:** the exacqVision password obtained previously

NOTE: If you are using a PTZ camera, select the PTZ box and any enter any preset position you want to see in the PTZ Preset Position field.

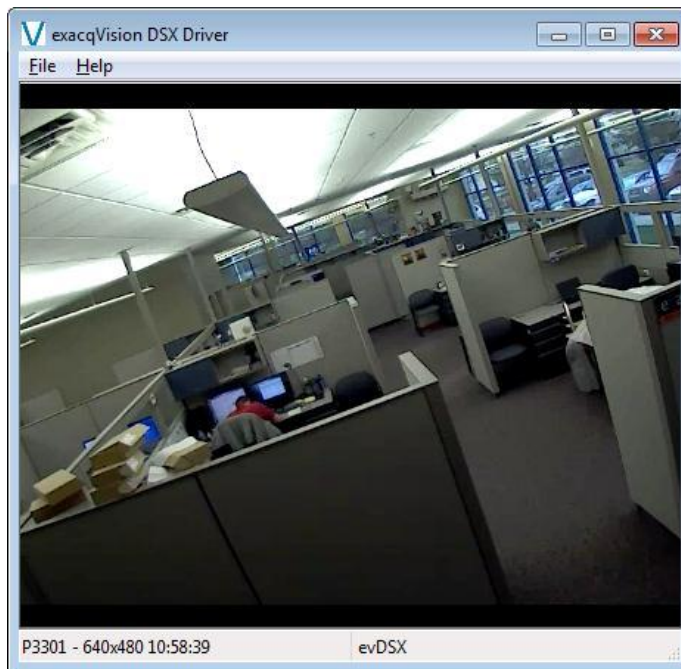
The screenshot shows the 'Cameras Camera One' dialog box with the 'Digital Video Camera' tab selected. The 'DVR Server Name' field contains '192.168.100.71', 'Assign Cameras' is '0', 'History To Retrieve In Seconds' is '120', 'PTZ Preset Position' is '0', 'DVR Server User Logon' is 'admin', and 'DVR Server Password' is masked with asterisks. There is a 'PTZ Camera' checkbox which is unchecked. There are buttons for 'Previous', 'Next', 'Cancel', and 'OK'.

6. Click **OK**.

7. Click the **Workstation** window.
 - a. Double-click your location.
 - b. Click **Cameras**.



8. The cameras defined for your location appear in the right window. Right-click any camera and choose **Live Video** or **Recorded Video** from the pop-up menu. A window with the desired video is displayed.



NOTE: If socket errors appear when you try to view live or recorded video, ensure that the dongle is correctly plugged in and the DSXKey service is running on the WinDSX server.